

Resort Catalog

2026 Edition

salteebay

Effortless Essentials. Made for Resort.

JK INTERNATIONAL

We simplify sourcing and development for fashion buyers and resortwear brands:

Resortwear Development

Custom & Ready Styles

Sampling & Fitting

Fabric & Trim Selection

Bulk Production

Quality Control

Export Packaging

Worldwide Delivery

We Help You Source Smarter

At SALTEEBAY, a label by JK International, we specialize in helping global buyers bring premium resortwear visions to life with precision, scale, and reliability. Whether you're a retailer, importer, or private label brand, we provide everything you need to develop and produce bestselling styles with ease.

From trend-forward ready designs to fully custom development, we manage the entire process in-house, from fabric sourcing and sampling to bulk production, quality control, and international shipping.

We are equipped to handle large-scale orders, with flexible timelines, consistent communication, and uncompromised quality, making us the ideal manufacturing partner for established buyers and scaling brands worldwide.

Every order goes through our structured workflow, including expert pattern development, fabric optimization, meticulous trim handling, and secure packaging. Our team is hands-on and transparent through every stage of production.

At SALTEEBAY, we're committed to helping you scale your resortwear collection with professional support, global readiness, and stylish execution.



JK International

**Effortless Design, Custom Label
Ready**

Curated, Trend-Driven Styles. Delivered Fast.

CONTACT US TO ORDER

Step-by-step

Preparation

Sampling Stage

1-2 Months

Production Stage

2-3 Months

Delivery

① Browse Our Catalog / Submit Design Brief

1-2 weeks

JK INTERNATIONAL

Option A – From Our Catalog

Explore our curated garment collection. Choose styles you like and we'll proceed with sampling.

Option B – Custom Design

Send us your design brief, reference images, or moodboards. We'll collaborate with you on fabric, trims, and construction ideas.

② Sampling Phase 1-2 months

We develop and ship samples for your approval. This includes:

- Construction samples
- Print/embroidery placement
- Packaging previews (if needed)

Revisions are done if necessary. Weekly progress updates are provided.

③ Bulk Production 2-3 months

Once samples are approved, your bulk order enters production. Includes:

- Fabric & trim sourcing
- Cutting, stitching, finishing
- Quality control & packing

Weekly updates throughout the process.

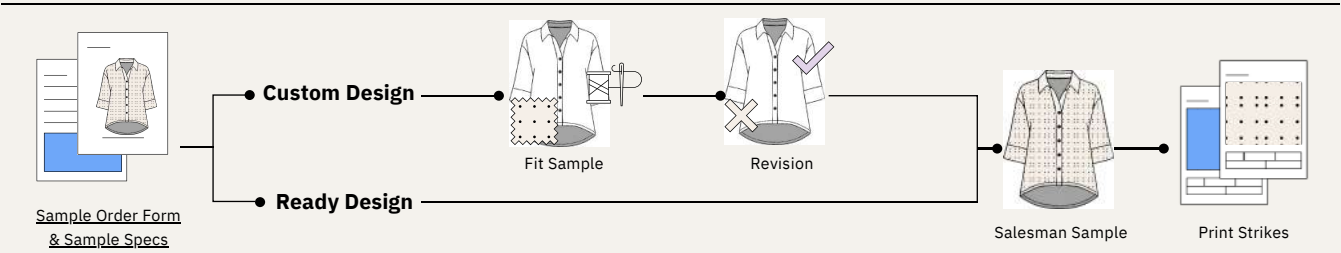
④ Delivery

Via DHL Express, 4-5
business days worldwide.

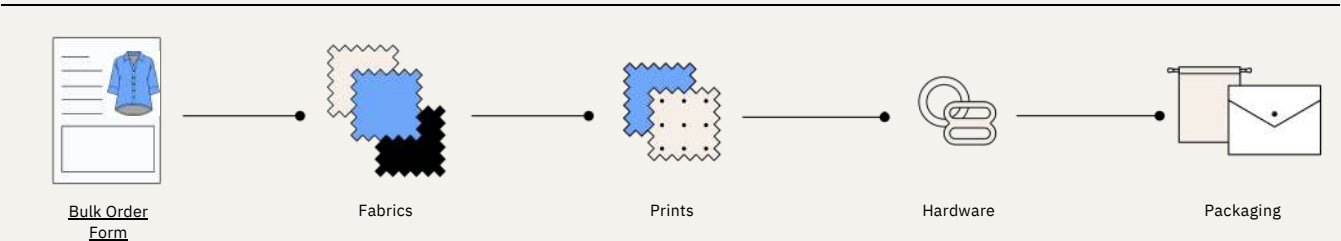
We handle the logistics and documentation for international delivery. You'll receive a tracking ID and shipping support from our team.

You can also mix catalog designs with your custom styles – we're flexible to your creative needs.

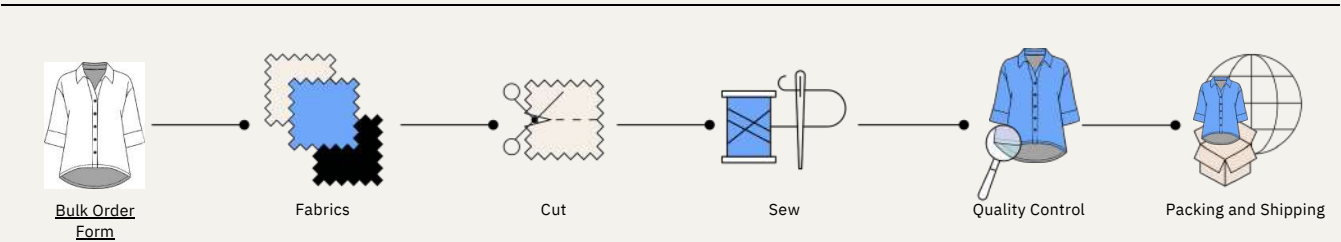
Sampling



Bulk Preparation



Bulk Production





Ready Design

Ready Design is our pre-developed collection of resortwear styles that are fully prepared for branding and immediate selling. Each year, we conduct extensive trend research to understand what women's apparel is in demand, which styles are fading out, and what the upcoming seasonal directions look like. Using these insights, we craft a collection that merges trend-forward silhouettes with refined, reimagined classics.

This line offers the flexibility to mix and match tops and bottoms across styles or even incorporate them with your custom pieces to build a cohesive resortwear collection. Ready Design styles are available in a selection of curated fabrics, seasonal colors, and exclusive prints. Since all development work — including pattern making and grading — is already done, there are no upfront costs. You simply pay per piece. It's the most time-efficient and cost-effective way to bring your brand to life with minimal setup.

Custom Design

Custom Design is your opportunity to create something entirely your own. Whether you're a designer with full tech packs and patterns or someone with just an idea and reference images, we'll help you translate your vision into production-ready garments. We provide easy-to-follow templates (sample specs) to support every step, from concept to final design. You're welcome to draw inspiration from our Ready Design collection as well — combining elements from different styles or infusing them with your own details to create something unique.

	Service	Price, US\$	Comments
Product Development	Custom Design Development Fee	\$99/design (50% credited to bulk)	We provide service to help you create your custom designs from the ground up, which includes pattern making and size range grading. 50% of the fee will be credited toward your bulk order for each design you develop. Please note that any revisions to your custom design are not covered by this fee.
	Custom Design Sample Fee	3X Bulk Price	Create Samples to Cultivate Your Own Design. The fee covers one sample that we will send to you, along with a copy that we retain. This means you won't need to return your sample, allowing you to save both time and costs during the development process.
	Custom Design Additional Revision Fee	\$49/revision	If any revisions are required following the initial development, there will be a charge for each round of revisions.
	Pre-Production Sample (PPS)	2X Bulk Price	Order with production, delivered early. Max 20PPS and 1 size per style/color/print. Additional sizes or 20+ counts as regular sample (3x).
	Ready Design Sample Fee	3X Bulk Price	No development cost, pay per pieces. Make samples to test colors, prints and hardware for Ready Design.
Prints & Graphics	Print Strike(s) & Mock-up	\$25	Digital mock-up of print at different scales on resort model + test print on fabric.
	Print Placement (Rare)	\$35/style/size	Only for prints with a set specific layout on product. Development cost to finalize pattern digitally and placing print according to spec.
	Logo Re-work (Optional)	\$35	If your logo is of low resolution, file corrupt, or need other adjustment or even re-creation. One-time charge.
	Packaging Development	\$10/design	Includes layout of logo/tagline/website on packaging option, mock-up for approval and actual sample.
	Other Graphic Work	\$25/hour	

MOQ Per Order

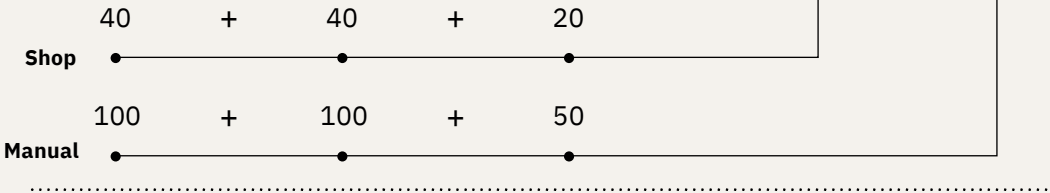
Samples
No MOQ.

Shop
MOQ 100 pcs/order.

Manual (Custom Design or Mix)
MOQ 250 pcs/order.

Example: You can order 40 tops,
40 bottoms, and 20 dresses
to reach our Website Order MOQ.

You can order 100 tops, 100
bottoms, and 50 dresses
to reach our Manual Order MOQ.



MOQ Per Style/Color/Print

Our MOQ per style and color/print is 40pcs.

Example: If you want a particular top in blue, sand and leopard print, you have to order at least 40 pcs of each.



Blue Tops



Sand Tops



Printed Tops

MOQ Per Size

Our MOQ per size 6 pcs. You need to order minimum 6 of each size you want your garment in.

Example: If you want your purple top in a size range of XS-L, then you can order 6XS, 14S, 14M, and 6L. You can order more however you like, and use any size range you prefer, but for whatever size you choose, you need to order at least 6 pcs.



XS



S



M



L

Ready Design 2026

Mix and match tops and bottoms between any styles you wish. You could even combine our designs with your own to complete your resort line. Take the designs as they are (and add your choice of colors) and you'll have a development fee-free experience (pattern making & grading)!

If you want other styles or to adjust the cuts of our styles in other ways, you can - but we'll treat it as a custom design and we need to re-develop the style from scratch. This would include development fees.

Adding or switching a small accessory and embroidery details are most likely acceptable without re-development. If you have a special request, just ask! We'll do what we can to help.

We will be releasing new designs yearly, both classics, trendy, and statement.





Classic Styles

Garment Name: Criss-Cross Halter Top

Style Code: SB-SS26-TP-01

◆ **Classic Style**

Category: Tops



Sculpted neckline with a bold summer silhouette
Designed to elevate both resort lounging and evening looks

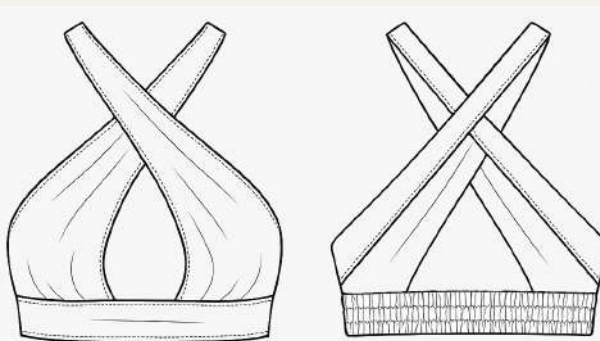
Fabric: Viscose Sateen / Bamboo Fabric /
Poly Rayon Blend

Sleeve Length:

Stitching: Double-needle hem

Finish: Clean finish, elasticated back
panel

Hardware:



Style Details:

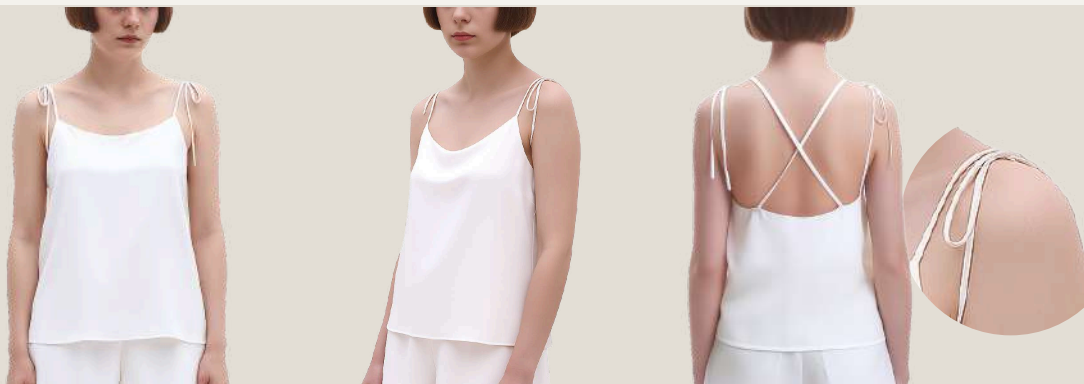
- Criss-cross halter neckline with keyhole
- Wide underbust support band
- Light bust gathering
- Elasticated back
- Bust lining

Garment Name: Tie-Back Cami Top

Style Code: SB-SS26-TP-02

◆ **Classic Style**

Category: Tops



Airy drape and feminine back detail

Perfect for resort layering or elevated minimal looks

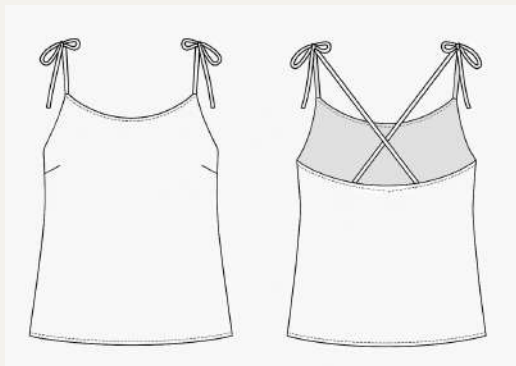
Fabric: Viscose Sateen / Bamboo Fabric /
Poly Sateen

Sleeve Length:

Stitching: French seams or overlocked inside,
topstitched neck edge

Finish: Straight hem, clean internal finish

Hardware:



Style Details:

- Delicate tie-up shoulder straps
- Scoop neckline
- Criss-cross back straps
- Straight hem

Garment Name: Handkerchief Hem Tie-Back Top

Style Code: SB-SS26-TP-03

◆ **Classic Style**

Category: Tops



Striking angled hem with adjustable back tie

Perfect for summer escapes and layered vacay looks

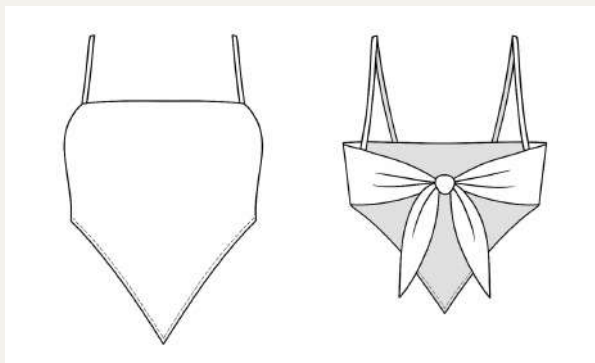
Fabric: Linen 17 / Linen crinkle/ Organic Cotton

Sleeve Length:

Stitching: Overlocked side seams, narrow hem at handkerchief points

Finish: Bound neckline, reinforced back tie

Hardware:



Style Details:

- Handkerchief-style pointed hem
- Square neckline with slim shoulder straps
- Open back with wide self-tie closure

Garment Name: Oversized Resort Shirt

Style Code: SB-SS26-TP-04

◆ **Classic Style**

Category: Tops



Relaxed silhouette and airy sleeve detail

Perfect for layering over swim or lounging in luxe comfort

Fabric: Pure Linen 14 / Organic Cotton /
Linen Crinkle

Sleeve Length: 3/4th length

Stitching: Flat-felled seams, topstitched
collar

Finish: High-low hem, box pleat at back

Hardware: Shell or tonal buttons



Style Details:

- Collared button-down with dropped shoulders
- Wide 3/4th sleeves with cuff panel
- Box pleat at back
- High-low hem

Garment Name: Paperbag Tie-Waist Shorts

Style Code: SB-SS26-BT-01

◆ **Classic Style**

Category: Bottoms



High-rise fit with a cinched waist silhouette

Ideal for summer lounging or styling with resort separates

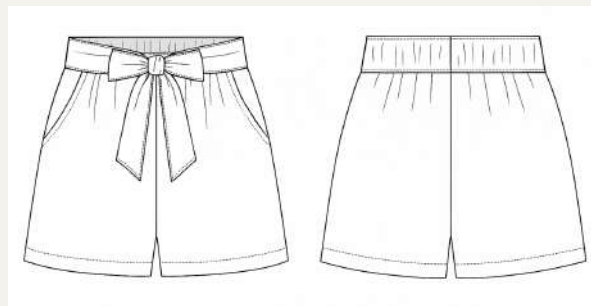
Fabric: Linen Crinkle / Linen 17 / Bamboo
Fabric

Inseam Length: Short

Stitching: Double topstitch on waistband,
overlocked inseam

Finish: Detachable belt, side pockets

Hardware:



Style Details:

- Paperbag-style high waistband with soft gathers
- Self-fabric waist tie belt (detachable)
- Slanted side pockets
- Elastic panel at back waist

Garment Name: Curved Hem Pull-On Shorts

Style Code: SB-SS26-BT-02

◆ **Classic Style**

Category: Bottoms



Curved hem with easy movement and soft structure

Ideal for lounging, strolls, or layering over swimwear

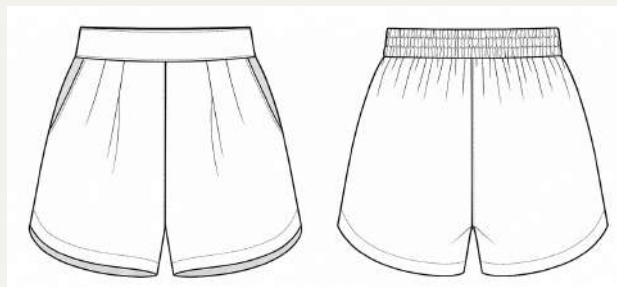
Fabric: Bubble Cotton / Organic Cotton /
Poly Rayon Blend
Short

Inseam Length:

Stitching: Overlocked, curved hem folded

Finish: Flat front, elasticated back

Hardware:



Style Details:

- Curved overlapping hemline
- Flat front waistband with soft pleats
- Elasticated back waistband
- Slanted side pockets

Garment Name: Side-Slit Resort Pants

Style Code: SB-SS26-BT-03

◆ **Classic Style**

Category: Bottoms



Statement side slits and fluid drape
Ideal for poolside styling or elevated beach evenings

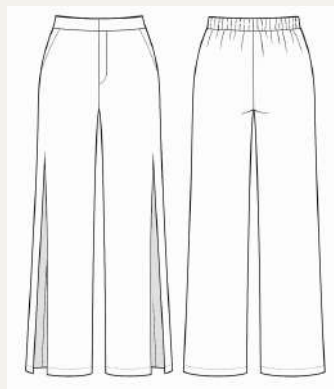
Fabric: Viscose Sateen / Linen 14 / Crepe
Bamboo

Inseam Length: Ankle length

Stitching: Inside overlocked with slit edges faced

Finish: Functional pockets, clean waistband

Hardware:



Style Details:

- High-rise flat front waistband
- Dramatic high side slits on both legs
- Elasticated back waistband
- Functional side pockets

Garment Name: Front-Slit Resort Pants

Style Code: SB-SS26-BT-04

◆ **Classic Style**

Category: Bottoms



Resort pants featuring front slits and a tailored waistband finish
Perfect for elevated vacation styling, poolside layering, or relaxed daywear

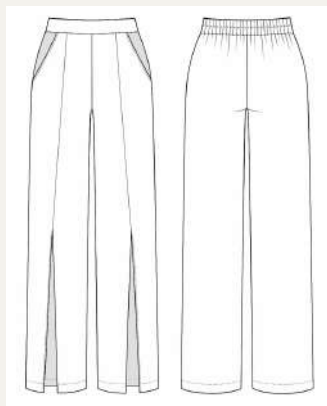
Fabric: Viscose Sateen / Crepe Bamboo /
Linen 14

Inseam Length: Ankle length

Stitching: Topstitched seams, bound slits

Finish: Flat front, back elasticated

Hardware:



Style Details:

- Wide-leg flowy silhouette
- Front slits
- Flat front waistband with back elastic
- Seamless side pockets

Garment Name: Knotted Wrap Romper

Style Code: SB-SS26-DR-01

◆ **Classic Style**

Category: Dresses / Playsuits



Graceful wrap-front silhouette with feminine knot detail
Ideal for day-to-night resort looks or elevated minimal dressing

Fabric: Linen / Modal Cotton / Viscose
Sateen

Sleeve Length:

Length: Short-length romper

Stitching: Faux-wrap with topstitch, invisible
zipper at center-back

Finish: Curved overlap hem

Hardware: Invisible zip



Style Details:

- Sweetheart neckline
- Spaghetti straps
- Faux-wrap front with waist knot
- Curved overlapping panel
- Center-back zipper
- Bust area lining

Garment Name: Criss-Cross Strap Ladder-Front Midi Dress

Style Code: SB-SS26-DR-02

◆ **Classic Style**

Category: Dresses



Breezy and elegant with modern ladder-front detail

Ideal for summer soirées or resort evenings

Fabric: Viscose Sateen / Poly Sateen/ Organic Cotton

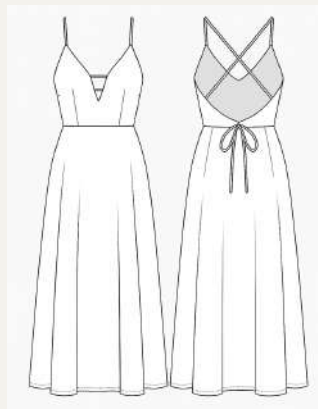
Sleeve Length:

Length: Midi length

Stitching: Princess seams bound inside, bartacked ladder straps

Finish: Clean hem, open back tie

Hardware: Zipper



Style Details:

- Deep V-neckline with ladder strap detail at bust
- Spaghetti shoulder straps
- Criss-cross open back with fixed tie at waist and zipper on side
- Fitted bodice with princess seams
- Upper bodice lining

Garment Name: Relaxed Shirt Midi Dress with Cap Sleeves

Style Code: SB-SS26-DR-03

◆ **Classic Style**

Category: Dresses



Relaxed Shirt Silhouette with a Breezy High-Low Hem

Effortlessly chic for beach layering, lounging, or summer errands

Fabric: Linen Crinkle/ Organic Cotton/ Poly Rayon

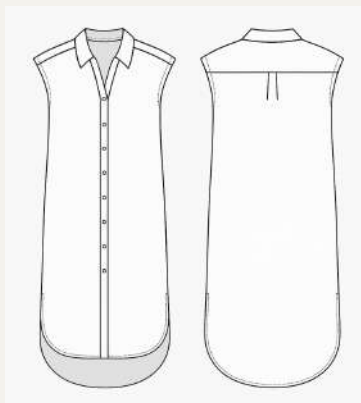
Sleeve Length: Cap sleeves

Length: Midi length

Stitching: Flat-felled seams, topstitching at placket

Finish: Button-down front, high-low hem
with side slits

Hardware: Tonal buttons



Style Details:

- Relaxed shirt dress with drop shoulder and extended cap sleeves
- Full-length front button closure
- Rounded high-low hem with side slits

Garment Name: Ring-Front Strappy Dress

◆ **Classic Style**

Style Code: SB-SS26-DR-04

Category: Dresses



Breezy elegance with a touch of shine

Perfect for sun-drenched getaways or elevated resort lounging

Fabric: Viscose Sateen / Crepe Bamboo / Poly/
Linen/ Viscose

Sleeve Length:

Length: Maxi length

Stitching: Tiered hem with narrow finish, reinforced
bust

Finish: Back tie closure, resin ring at center

Hardware: Resin ring



Style Details:

- Slim shoulder straps
- Plunging V-neckline with center ring embellishment
- Tie at mid-back
- Gently flared A-line silhouette
- Ruffled tiered hem



Trendy Styles

Garment Name: Scallop Hem Tie-Up Puff Sleeve Top

Style Code: SB-SS26-TP-05

◆ Trendy Style

Category: Tops



Romantic charm and breezy silhouette

A fusion of sleeves, scallop trims, and delicate tassel-tie finish

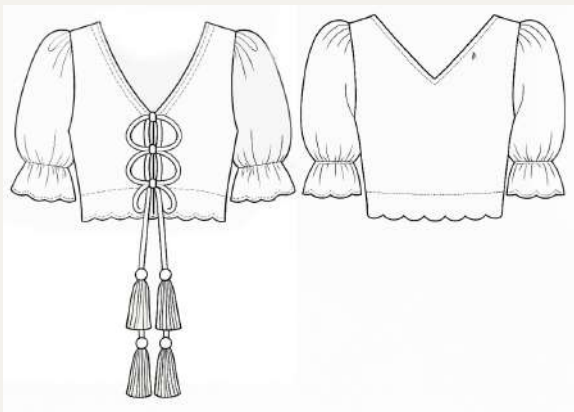
Fabric: Slub Cotton / Organic Cotton /
Linen Cotton Blend

Sleeve Length: Elbow-length puff sleeves

Stitching: Scallops hand-cut or laser-
finished, gathered sleeve cuffs

Finish: Clean neckline and hem

Hardware: Cotton tassels & soft rope tie



Style Details:

- Front tie-up loops with tassel detail
- V-neckline front and back
- Puff sleeves with gathered cuff
- Scalloped hem finish

Garment Name: Shell Strap Ruffle Crop Top

Style Code: SB-SS26-TP-06

◆ Trendy Style

Category: Tops



Statement Shoulder Detail with a Sculpted Silhouette

Perfect for elegant resort evenings or elevated festive wear

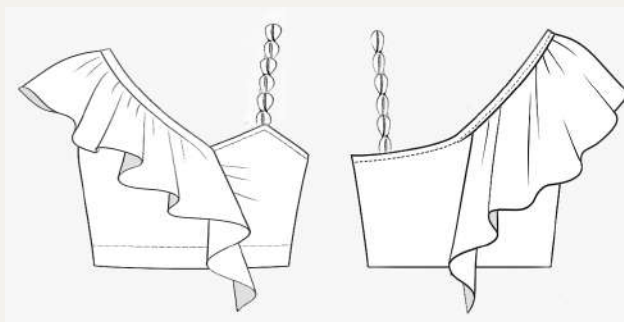
Fabric: Poly-Crepe / Linen Crinkle /
Viscose Sateen

Sleeve Length:

Stitching: Clean edge seams, bartack on
ruffle joins

Finish: Detachable scarf with loop
fastening

Hardware: Shell-beaded strap (fixed)



Style Details:

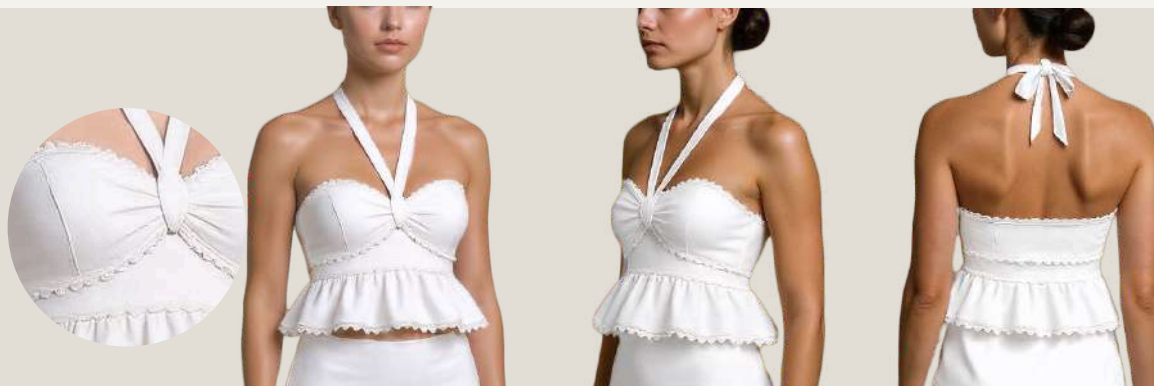
- Asymmetric one-shoulder
- Elasticated detachable scarf for movable sleeves
- Dramatic cascading ruffle scarf from front to back
- Shell-embellished single shoulder strap

Garment Name: Halter Tie Peplum Top

◆ **Trendy Style**

Style Code: SB-SS26-TP-07

Category: Tops



Sweet silhouette and sculpted fit

Perfect for vacation dinners or daytime statement style

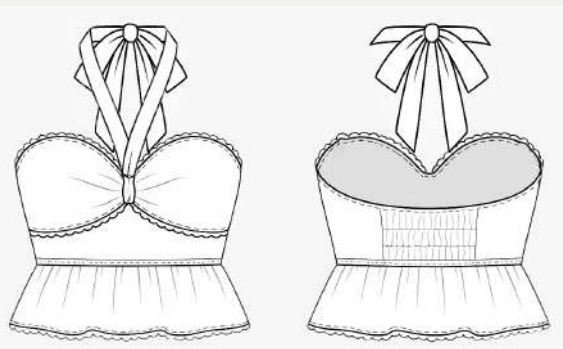
Fabric: Cotton Poplin / Linen Blend /
Organic Cotton

Sleeve Length:

Stitching: Lace trims topstitched; peplum
edge double hemmed

Finish: Elastic smocked back, back neck
tie

Hardware:



Style Details:

- Halter neck with center knot tie
- Soft sweetheart bustline
- Double-tiered peplum waist
- Lace scallop trims at bust, waist, and hem
- Back neck tie with elasticated smocking

Garment Name: Shell Embroidered Cape Top

Style Code: SB-SS26-TP-08

◆ **Trendy Style**

Category: Tops



Breezy silhouette with statement cutwork hem

Perfect for nautical-inspired resort dressing

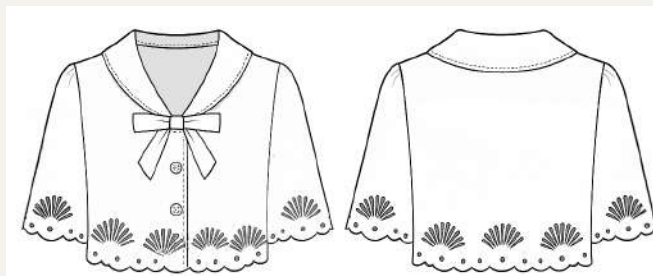
Fabric: Cotton Twill / Bubble Cotton /
Poly-Crepe

Sleeve Length: Elbow-length cape
sleeves

Stitching: Shell embroidery laser cut or
hand stitched

Finish: Clean finish with cape overlay

Hardware: Shell-shaped tonal buttons



Style Details:

- Structured sailor collar with bow tie
- Cape-style overlay with relaxed drape
- Scalloped sleeves and hem with shell cutwork embroidery
- Front placket with decorative shell buttons

Garment Name: Shell & Starfish Embroidered Shorts

◆ **Trendy Style**

Style Code: SB-SS26-BT-05

Category: Bottoms



Tailored fit with elegant beachside embroidery
Perfect for elevated daywear and seaside escapes

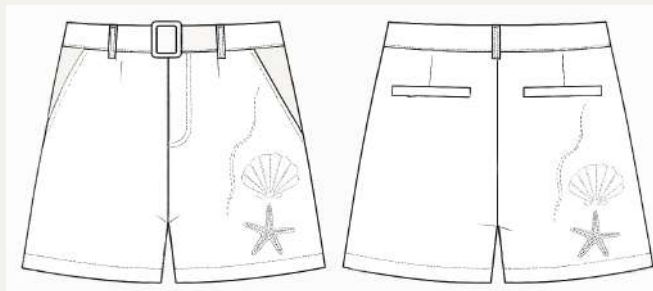
Fabric: Linen Blend / Cotton
Twill / Organic Cotton

Inseam Length: Short

Stitching: Laser-cut/hand embroidery,
topstitched waistband

Finish: Hook & bar with hidden zip fly

Hardware: Embroidery, zip



Style Details:

- Mid-thigh tailored silhouette
- Tonal sea-inspired embroidery
- Clean waistband and detachable belt
- Front and back pockets
- Cutwork embroidery on front and back legs

Garment Name: Shell Embroidered Scallop Wrap Skirt

Style Code: SB-SS26-BT-06

◆ Trendy Style

Category: Bottoms



Breezy movement with feminine wrap detail

Perfect for resort dressing with playful shell accents

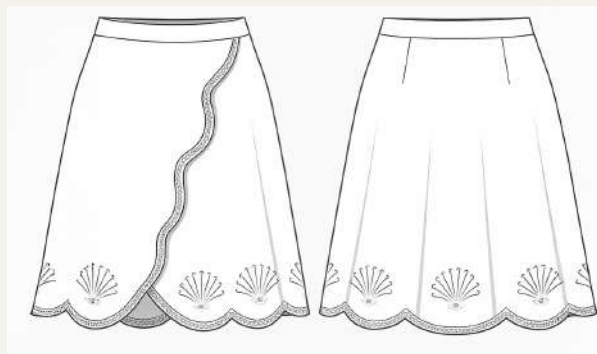
Fabric: Cotton Twill / Linen 14 /
Poly/Linen/Cotton

Length: Midi length

Stitching: Scallop hem, embroidery
stitched flat

Finish: Fixed waistband, internal button
wrap

Hardware: Optional custom embroidery



Style Details:

- Elegant shell embroidery along entire hem (front, side & back)
- Feminine front wrap with scalloped edge
- A-line flare with fixed high waistband

Garment Name: Nautical Charm Crochet Shorts

Style Code: SB-SS26-BT-07

◆ Trendy Style

Category: Bottoms



Nautical textures and playful trims

Perfect for beach lounging or standout resort styling

Fabric: Open-Weave Cotton
Crochet / Cotton Gauze

Inseam Length: Short

Stitching: Crochet base, bound
hem

Finish: Adjustable charms on
ring loops

Hardware: Crochet charms,
rings



Style Details:

- High-rise wrap-over panel on front left leg
- 3D nautical crochet charms
- Straight hem with bound edge finish
- Detachable and adjustable charm string

Garment Name: Shell Embroidered Tiered Skirt

Style Code: SB-SS26-BT-08

◆ Trendy Style

Category: Bottoms



Airy tiers with embroidered shell motifs

Perfect for beach getaways or elevated summer wear

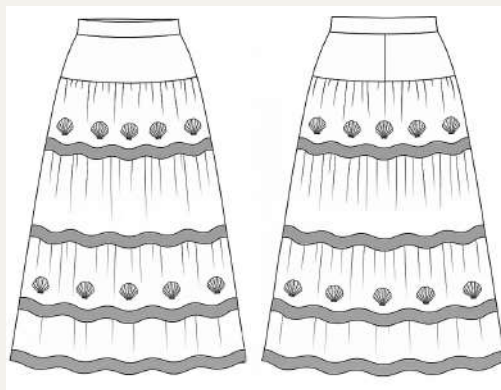
Fabric: Poly-Cotton Mesh / Sheer Net /
Viscose Sateen

Length: Maxi length

Stitching: Bound seams or French seam
finish

Finish: Concealed side zip, scallop bands

Hardware: Shell embroidery



Style Details:

- Alternate gathered tiers of cotton and sheer
- Shell embroidery detail
- Wide fixed waistband
- Contrast scallop bands
- Side zip closure
- Built-in in opaque tiers

Garment Name: Criss-Cross Halter Asymmetric Dress

Style Code: SB-SS26-DR-05

◆ Trendy Style

Category: Dresses



Flattering neckline and layered hem finish

Perfect for upscale resort evenings or beach-to-bar transitions

Fabric: Crepe Bamboo / Viscose Sateen / Poly-Crepe

Sleeve Length:

Length: Asymmetric midi length

Stitching: Panel seams at hem

Finish: Asymmetrical layered hem

Hardware:



Style Details:

- Halter neckline with adjustable criss-cross tie straps
- Soft gathered bust with front keyhole detail
- Wide waistband and layered handkerchief hem
- Smocked elastic panel at back
- Full lining

Garment Name: Fringed Tiered Resort Halter Dress

Style Code: SB-SS26-DR-06

◆ **Trendy Style**

Category: Dresses



Breezy silhouette with gathered tiers and playful fringe trim

Perfect for elevated tropical escapes and vacation dressing

Fabric: Modal-Cotton / Rayon Slub / Viscose Sateen

Sleeve Length:

Length: Maxi length

Stitching: Tiers gathered with fringe stitched
between

Finish: Elasticated shirred back panel

Hardware: Metal neck clasp



Style Details:

- Halter neckline with ruched detailing and back neck clasp
- Double front cut-outs
- Triple gathered tiers
- Fringe trims at every tier seam and hem

Garment Name: Twist Front Cutout Halter Midi Dress

Style Code: SB-SS26-DR-07

◆ **Trendy Style**

Category: Dresses



Effortless elegance with sculpted twist-front bodice

Perfect for breezy, statement-making resort looks

Fabric: Rayon Slub Jersey / Poly Sateen / Viscose
Sateen

Sleeve Length:

Length: Midi length

Stitching: Invisible tacks at twist, bound cutouts

Finish: Elasticated back band

Hardware:



Style Details:

- Twist-front halter neckline with self-tie straps
- Gathered bust and draped front panel
- Side cutouts leading to lower back waistline

Garment Name: Shell-Appliqué Sweetheart Dress

Style Code: SB-SS26-DR-08

◆ **Trendy Style**

Category: Dresses



Breezy elegance with structured shell sculpting
Perfect for elevated resortwear or beach-to-dinner styling

Fabric: Cotton Twill / Poly-Crepe / Bubble Cotton

Sleeve Length:

Length: Midi length

Stitching: Shell shape hand-appliquéd, lined bodice

Finish: Invisible zipper, clean hem

Hardware: Side invisible zip



Style Details:

- Sweetheart neckline with sculpted shell-style appliqué over bust
- Appliqué curves from front to back, forming a full shell outline
- Full lining



Statement Styles

Garment Name: Tie-Front Shell Cutwork Top

Style Code: SB-SS26-TP-09

◆ **Statement Style**

Category: Tops



Statement sleeve top with playful front tie & airy summer detailing

Perfect for tropical getaways or chic resort evenings

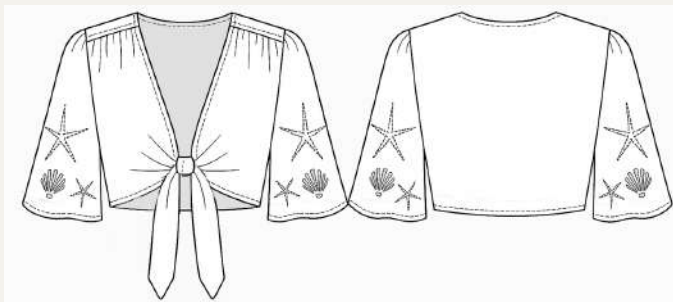
Fabric: Cotton Poplin / Organic
Cotton / Modal-Cotton

Sleeve Length: Elbow-length flared
sleeves

Stitching: Scallop sleeve edge with
clean finished front tie

Finish: Facing at neckline, shell
embroidery on sleeves

Hardware:



Style Details:

- Deep V neckline with knotted tie-front
- Elbow-length flared sleeves with scalloped edges
- Starfish and shell embroidery on sleeves
- Gathered shoulder seams for volume

Garment Name: Nautical Charm Trim Crochet Top

Style Code: SB-SS26-TP-10

◆ **Statement Style**

Category: Tops



Playful Crochet Layers with Statement Nautical Charm Embellishments

Fabric: Cotton Crochet Knit / Cotton Gauze / Bamboo Fabric

Sleeve Length: Half-sleeves

Stitching: Crochet body with scalloped trim in contrast color

Finish: Attached crochet charms at hem

Hardware: Metal rings for 3D charms



Style Details:

- Relaxed drop shoulder fit
- Boat neckline with contrast scalloped edging
- Blue scalloped crochet trim on hem and sleeves
- Nautical-themed 3D crochet charms on hem

Garment Name: Coastal Charm Pants

Style Code: SB-SS26-BT-09

◆ **Statement Style**

Category: Bottoms



Perfect for sun-drenched escapes or breezy coastal lounging

Fabric: Textured Cotton Knit / Cotton
Crochet Knit / Crepe Bamboo

Inseam Length: Ankle length

Stitching: Clean crochet seam join, ring-
attached charms

Finish: Drawcord waist

Hardware: Crochet trim charms



Style Details:

- Mid-rise wide-leg silhouette
- Adjustable waist tie with hanging crochet charms
- Full-length straight cut
- Unlined for breathable comfort

Garment Name: Asymmetric Ruched Drawstring Skirt

Style Code: SB-SS26-BT-10

◆ **Statement Style**

Category: Bottoms



Sleek silhouette with customizable ruching

Effortless resort skirt with a flattering draped side slit

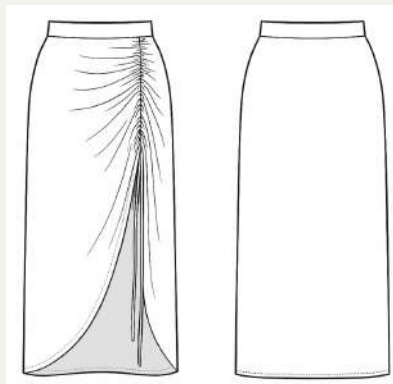
Fabric: Satin Viscose / Crepe Bamboo /
Poly-Crepe

Length: Midi length

Stitching: Side drawstring with casing, smooth
hem

Finish: Front overlap with bartack

Hardware: Minimalist drawcord



Style Details:

- Adjustable side ruching with long self-tie drawstring
- High-rise waistband with smooth finish
- Asymmetrical front overlap hem
- Midi length with dramatic slit

Garment Name: Nautical Crochet Tunic Dress

Style Code: SB-SS26-DR-09

◆ **Statement Style**

Category: Dresses



Relaxed A-line Fit with Playful Ocean Motifs

Perfect as a beach cover-up or statement resortwear piece

Fabric: Cotton Crochet Knit / Cotton Gauze
/ Bamboo Fabric

Sleeve Length: 3/4th length flared sleeves

Length: Mid-thigh length

Stitching: Crochet base with blue contrast
scallop

Finish: Metal rings attach 3D hanging charms

Hardware: Metal charm rings



Style Details:

- V-neckline with contrast blue double trim
- Flared sleeves and body
- 3D crochet hanging charms at hem
- Scalloped hem with contrast blue crochet edging

Garment Name: Sunburst Sleeve Tassel Dress

Style Code: SB-SS26-DR-10

◆ **Statement Style**

Category: Dresses



Breezy silhouette with bold sleeve detail

Perfect for elevated resort dressing with artisanal charm

Fabric: Matte Cotton Twill / Linen 14 /
Poly-Linen Blend

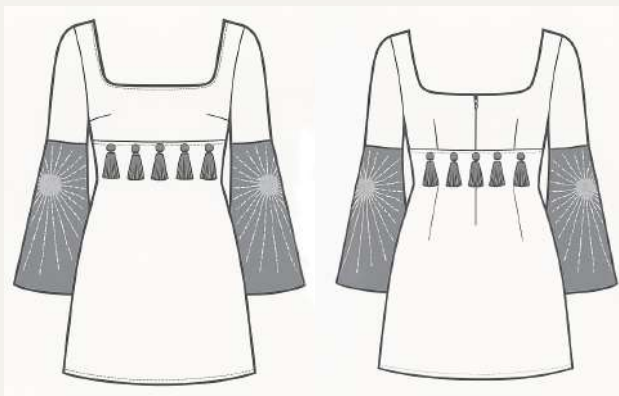
Sleeve Length: Full-length bell sleeves

Length: Mid-thigh length

Stitching: Embroidered contrast sleeves
with tassels at seam

Finish: Square neckline

Hardware: Tassels, embroidery



Style Details:

- Wide square neckline
- Fitted bodice with bust darts
- Flared bell sleeves in contrast blue with embroidery
- Statement tassels at underbust seam
- Back concealed zip opening



Standard Size Chart

WOMEN'S RESORT | 2026 VERSION



International Sizing	XS	S	M	L	XL	XXL
US	4	6	8	10	12	14
AU/UK Old	8	10	12	14	16	18
AU/UK New	6	8	10	12	14	16
Bust (cm)	83	87	91	95	99	103
Waist (cm)	65	69	73	77	81	85
Lower Hip (cm)	91	95	99	103	107	111
Inside Leg Length (cm)	72.5	73.5	74.5	76.5	76.5	77
Bust (in)	32.7	34.3	35.8	37.4	39	40.5
Waist (in)	25.6	27.2	28.7	30.3	31.9	33.5
Lower Hip (in)	35.8	37.4	39	40.6	42.1	43.7
Inside Leg Length (in)	28.5	28.9	29.3	29.7	30.1	30.3

Use a tape measure to measure, holding the tape securely around for key points.

- (A) Bust.** Measure over the fullest area of the bust & straight around the back.
- (B) Waist.** Measure waist under the rib cage and above the hip.
- (C) Lower Hip.** Measure the fullest part of the hip ensuring the tape is straight around the body.
- (D) Inside Leg Length.** Measure the inner thighs from below the crotch straight to the floor level.



Fabrics

We provide a select assortment of high-quality natural fabrics available at low minimum order quantities (MOQs). Additionally, we offer lightweight and breathable man-made fabrics that have an elegant drape—these polyester options are ideal for digital printing.

For more information about fabrics, please contact us through our website.

To know more about our fabric range and color options, [contact us.](#)

Prints

We do all our prints in house. All of our prints are made using ecological inks.

Endless print options.

Print Strikes

For all prints, we provide a mock-up and print-strike service. This means we will send you a digital mockup for size approval, followed by a 30x30 cm trial print swatch for your review. You can then assess the print quality personally, and if you find anything unsatisfactory, we'll make the necessary revisions!

For fabric prints, please ensure that the digital print file (artwork) is high-resolution (300DPI+) for optimal printing quality. Acceptable formats include vector, JPG, PNG, TIFF, or any other high-resolution file type.

Seamless

Artwork should be designed to be seamless or set up for repetition, which means that you can place copies of the print adjacent to one another in all directions, allowing the pattern to align without any disruptions. If the design isn't initially repeatable, you can often mirror the image in four directions to achieve a similar effect. We are here to help you ensure that your print can be repeated and replicated in a coherent pattern.

Scale

Lastly, the size of your print plays a crucial role. For instance, if you have a design featuring a seashell, consider the height of each seashell. The contrast between a small, 3 cm seashell and a large 15 cm seashell will significantly impact the outcome.

Print Options

*includes worldwide license



Your own print



[Pinterest](#)

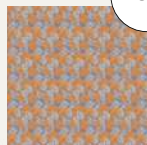


[Shutterstock](#)

Seamless Prints



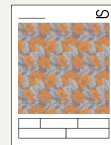
Artwork to be repeated and scaled



Scale A



Scale B



30 x 30 cm
Strike Off



Send to customer
for approval



Artwork to be repeated and scaled



Scale A



Scale B



30 x 30 cm
Strike Off



Send to customer
for approval



Artwork to be repeated and scaled



Scale A



Scale B



30 x 30 cm
Strike Off



Send to customer
for approval



Shipping

We ship globally using trusted international couriers like DHL, MAERSK LINE or other high-quality logistics partners to ensure safe, secure, and timely delivery of both samples and bulk orders.

Sample Shipment

Lead Time

Typically 4–7 business days worldwide.

Shipping Cost

Varies based on location and sample quantity. Final cost shared before dispatch.

Bulk Shipment

Lead Time

Usually 4–7 business days, plus 1–3 days for customs clearance through air shipment, but for shipping by sea time varies depending on the location

Shipping Cost

Depends on destination, order volume, and carton sizes. We'll provide a quote before shipment.

Custom & Duty

We prepare all necessary shipping documents to ease customs clearance.

While we assist in minimizing delays, the buyer is responsible for any import duties or taxes imposed by the destination country.

SUSTAINABILITY

Responsible Design. Conscious Production.

We embed sustainability at every level, from ethically sourced, certified recycled fabrics to low-impact dyeing and finishing processes. Our production is audited for ethical labor practices and transparency through Sedex-compliant frameworks.

Our preferred materials include **Better Cotton, Recycled Polyester**, and thoughtfully selected natural blends like **bamboo, modal, and organic cotton**, chosen for their drape, breathability, and environmental impact.

We're ready to support both boutique and bulk production with traceability, quality, and purpose.

Sustainability certifications and reports available upon request





Frequently Asked Questions

I'm new to fashion business and want to start my own. Any tips?

We work closely with both new and established brands. If you're starting out, we can help you refine your product line, select suitable fabrics, and align your designs with resortwear trends that perform well in the market.

Is your production ethical? Sustainable?

We manage the entire production process to ensure high standards of ethical practices and sustainability. From fair working conditions to responsible sourcing, every step is handled with care.

Do you have a minimum order quantity (MOQ)?

While we focus on bulk production, our flexibility allows us to assess orders based on style complexity, fabric, and production capacity. Please [contact us](#) to discuss your production needs and volume suitability.

What are your payment terms?

For bulk production, we typically require a 50% deposit upfront and the balance before dispatch. First-time clients may be requested to pay 100% upfront depending on order size and location. We accept bank transfers and offer secure payment options.

How long does production take?

Timelines depend on the complexity of the order and fabric availability. Typically:

- Sampling: 1–2 months
- Bulk production: 2-3 months
- Delivery via DHL Express, 4-5 business days worldwide.

We'll confirm exact timelines once final styles and fabrics are selected.

What other collections do you make?

At JK International, our collections are inspired by the essence of island living, drawing from Hawaiian culture, relaxed vacation moods, and effortless daily wear.

While our core remains women's resortwear, we're also expanding into adjacent categories that reflect a broader, lifestyle-driven approach to comfort, travel, and everyday elegance.

What kind of styles or products do you not do?

We specialize in garments — tops, dresses, bottoms, and co-ord sets. If your design involves non-textile components or materials we don't work with, we'll guide you accordingly.

Are my designs safe with you?

Yes. We treat all client information, sketches, and production plans with full confidentiality. If required, we're happy to work under NDAs and ensure your designs are never reused, shared, or disclosed.

Is bulk production required after sampling?

No! Sampling doesn't bind you to proceed with bulk, though we primarily partner with brands looking to scale production. You'll retain full rights over your developed patterns.

Which design files do you accept?

We accept design files in the following formats: **AI, PSD, PDF, TIFF, SVG, and PNG**. These are versatile and widely used across design, sampling, and production workflows, ensuring a smooth and seamless collaboration process.

Who are your typical clients?

We primarily work with resortwear brands, retailers, and importers catering to vacation and holiday markets. Many of our clients prefer to keep their designs confidential, and we honor that.

Whether you're an emerging label or an established wholesaler, we're here to help you scale.

Can we visit your office or production site?

Absolutely! We'd love to host you. On-site visits are available by prior appointment.

We welcome the opportunity for you to meet our team, explore how we work, and gain a deeper understanding of our sampling and production process.

Whether you're interested in seeing our materials, quality standards, or day-to-day operations, we're happy to walk you through it all in person.



JK International

anubhavkripal@jjkinternational.com

+91-9457025012

+911203103873

